



QUALITY HOMES, BUILT ON TRUST.



2353 CROWN ISLE DRIVE

**Welcome to Cambridge Park Estates in Crown Isle,
the residential golf community in the heart of the Comox Valley.**

This well designed 1985 square foot rancher is located in the new subdivision of Cambridge Estates in Crown Isle. It has three bedrooms, two bathrooms and includes all the high end finishings indicative of Integra Homes! So much to enjoy in this home from the open concept living space, gourmet kitchen including brand new Fisher & Paykel appliances, and luxurious master bedroom and ensuite. The landscaping will be complete with amazing curb appeal and covered patio allowing for year round enjoyment.

Call us today for details
250.331.1877

www.integrahomescv.ca

INTEGRA HOMES

C. 250.331.1877
O. 250.338.6318
BILL@INTEGRAHOMESCV.CA
WWW.INTEGRAHOMESCV.CA

EXTERIOR

- Timber and stone accents
- Natural gas outlet
- Covered patio
- Complete landscaping package
- Additional space in garage

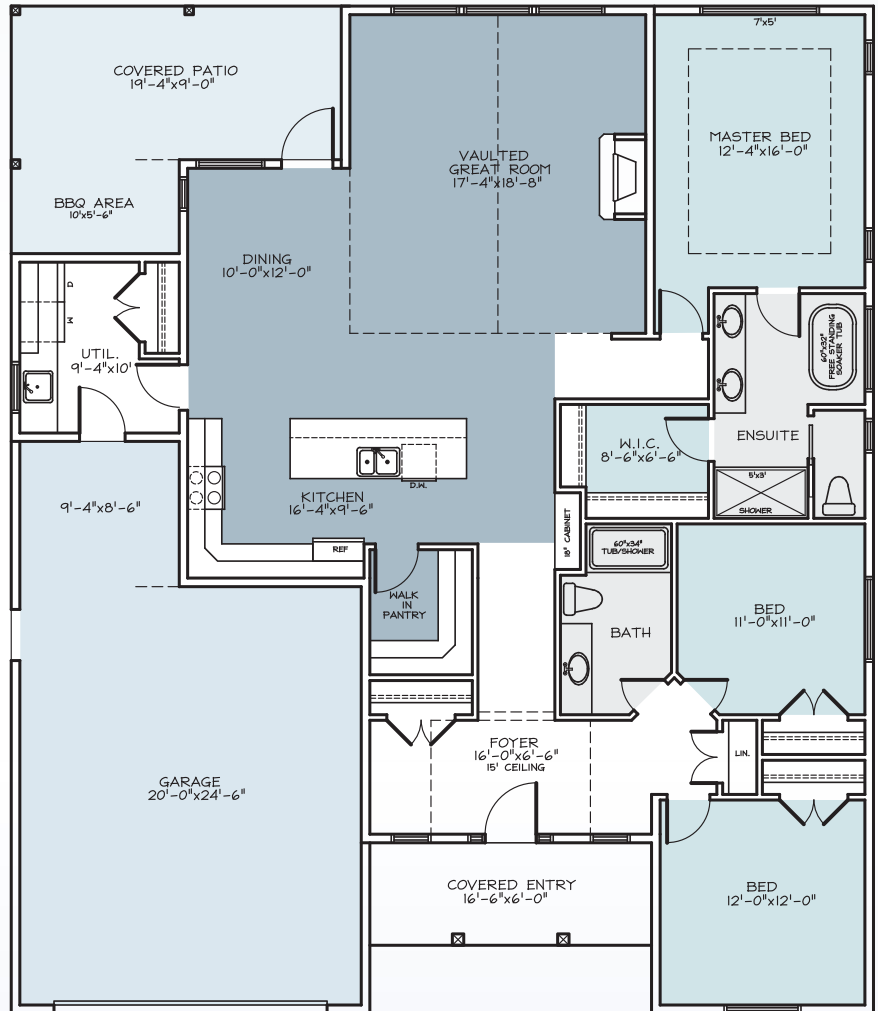
INTERIOR

- 15' ceiling in Foyer
- Vaulted ceiling in Great Room
- Gas fireplace
- Quartz counters in kitchen and bathrooms
- Engineered hardwood flooring in main living areas
- Walk-in closet in master bedroom
- Ensuite bathroom with frameless full ceramic shower and bench, double vanity, podium bathtub

KITCHEN

- Walk-in butler's pantry
- Large island with storage and lunch bar
- Fisher & Paykel appliances
- Floor to ceiling shaker cabinetry
- Quartz counters

This plan is published by Integra Homes.
Dimensions are approximate and subject to change without notice. All rights reserved, including the rights of reproduction in whole or in part, in any form, without written permission of Integra Homes.



MAIN FLOOR
1985 SQ. FT.

c: 250.331.1877

o: 250.338.6318

bill@integrahomescv.ca

www.integrahomescv.ca