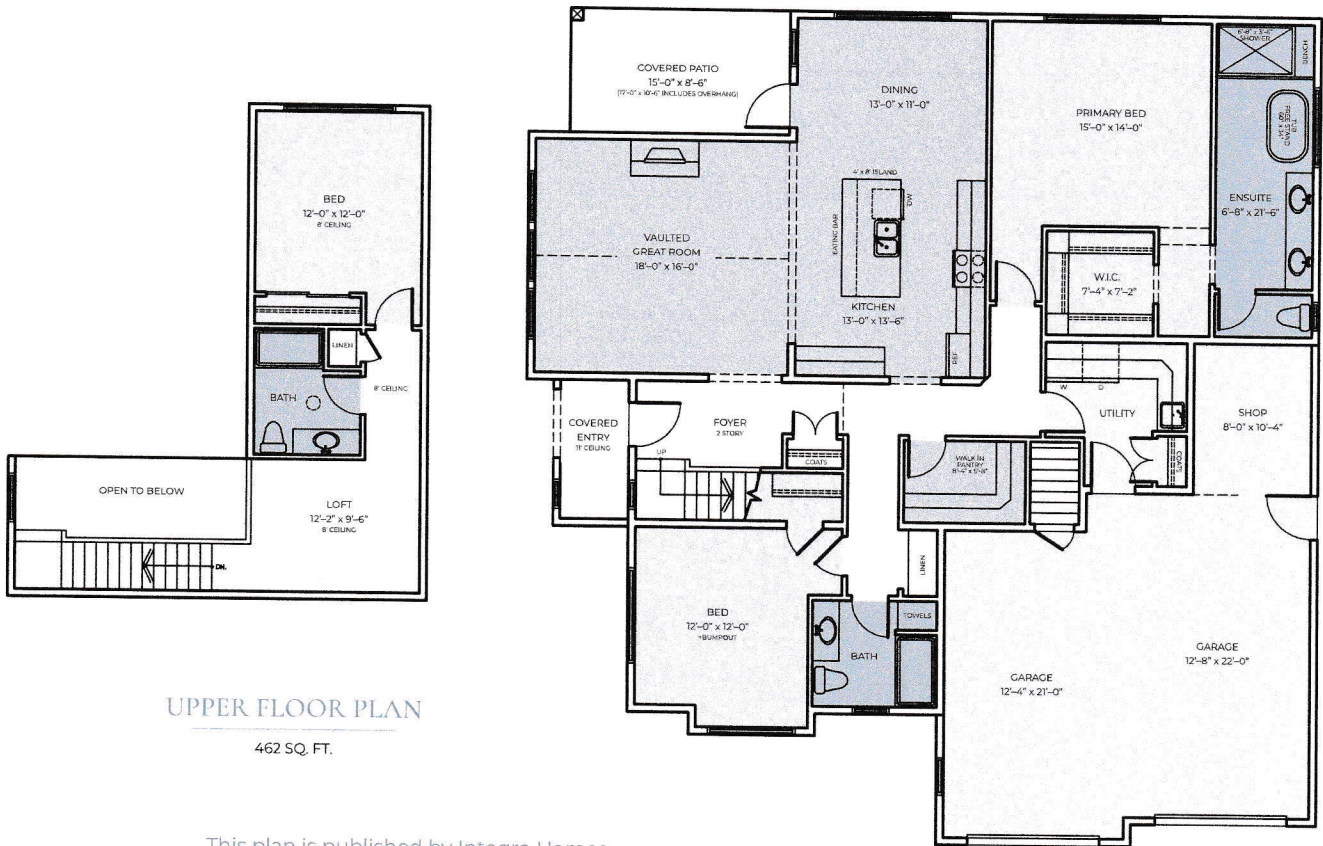




INTEGRA  
HOMES



UPPER FLOOR PLAN

462 SQ. FT.

MAIN FLOOR PLAN

1842 SQ. FT.  
2304 SQ. FT. TOTAL

This plan is published by Integra Homes. Dimensions are approximate and subject to change without notice. All rights reserved, including the rights of reproduction in whole or in part, in any form, without written permission of Integra Homes.

# 3248 WINCHESTER AVE.

 3 Bedrooms: 2 Main/1 Up |  3 Bathrooms |  2304 sqft Total: 1842 Main & 462 Upper



QUALITY HOMES BUILT ON TRUST

---

INTEGRA  
HOMES



## 3248 WINCHESTER AVE.

---

WELCOME TO GREYSTONE ESTATES AT CROWN ISLE: DISCOVER  
LUXURIOUS LIVING IN COMOX VALLEY'S PREMIER COMMUNITY

---

Step into refined living where sophistication meets comfort in this exceptional 3-bedroom, 3-bathroom home. With 2 spacious bedrooms on the main level and an additional bedroom upstairs, this residence offers versatility and convenience. The upper level features a generous loft space perfect for a movie room, office, or multi-purpose area, adding a touch of flexibility to your lifestyle.

Elegance abounds with high vaulted ceilings in the great room, exquisite crown mouldings, and rich hardwood floors. The open-plan living area seamlessly integrates with a gourmet kitchen featuring quartz countertops and a walk-in pantry. The primary bedroom on the main floor includes a luxurious walk-in closet and an ensuite with a level-entry tiled shower and heated floors. Additional highlights include a handy shop space in the garage and a serene covered patio. This home perfectly blends sophistication with practical luxury, offering a truly exceptional living experience.

---

INTEGRAHOMESCV.CA