

## PLAN B

3 BEDROOM, 2.5 BATH

1,680-1,689 SQ. FT. INDOOR

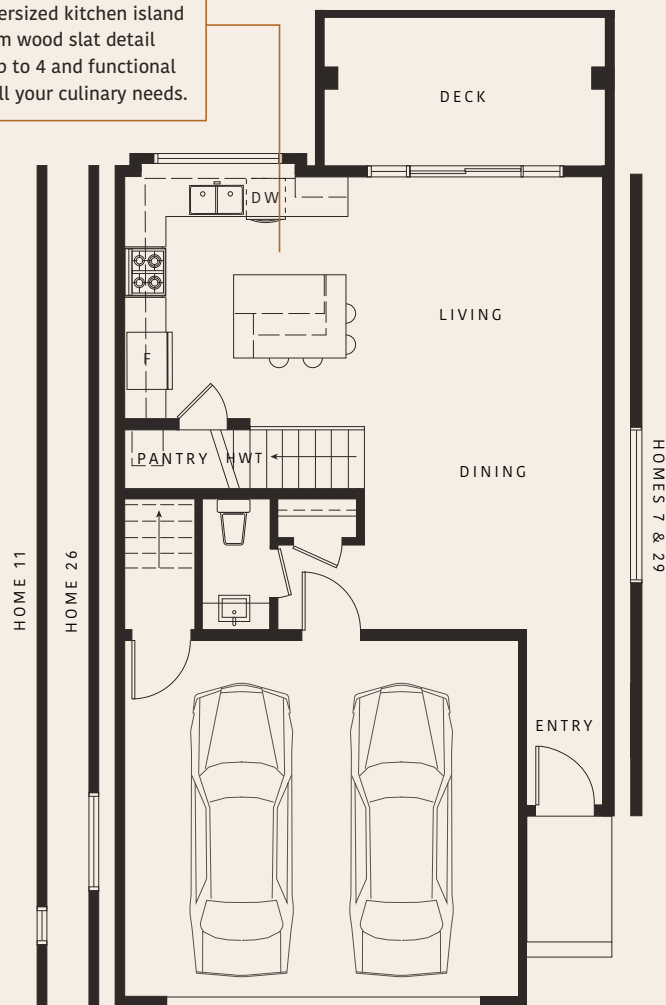
463-775 SQ. FT. OUTDOOR

Kitchen includes two-toned cabinets with a 24-inch deep second tier for added storage. Oversized kitchen island with stylish custom wood slat detail with seating for up to 4 and functional pantry space for all your culinary needs.

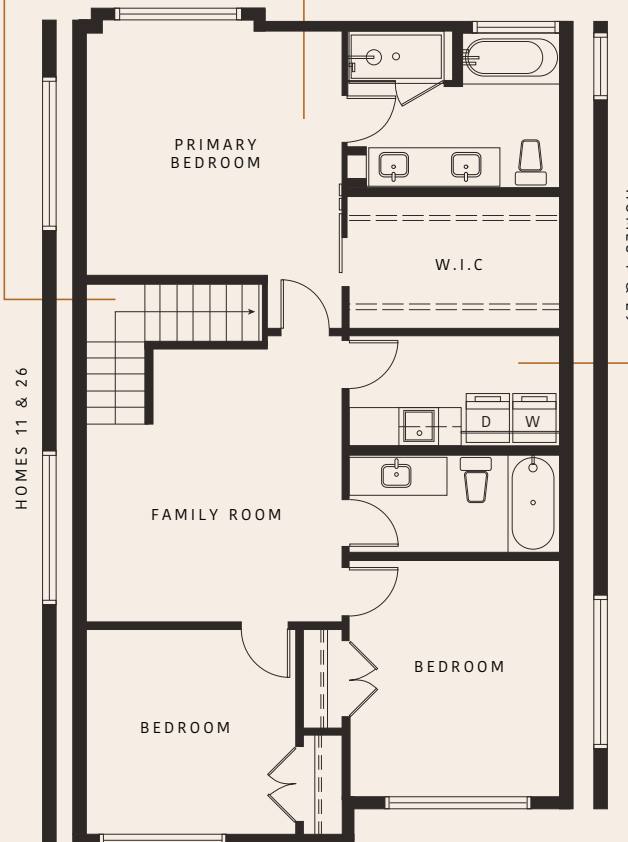
Stairwell features custom slatted wood wall detail with beautiful pendant lighting.

Includes spacious walk-in closet, 5-piece ensuite bathroom with double sink, and luxurious soaker tub.

Laundry room is on the same level as bedrooms with side-by-side washer and dryer, sink and cabinetry above for storage.



MAIN



UPPER

### WOODLOCK DEVELOPMENTS

In our continuing effort to improve and maintain the high standard of the Everwood development, the developer reserves the right to modify or change plans, specifications, features and prices without notice. Materials may be substituted with equivalent or better at the developer's sole discretion. All dimensions and sizes are approximate and are based on Architectural measurements. As reverse, flipped, and/or mirrored plans occur throughout the development please see architectural plans for exact unit layout if material to your decision to purchase. Renderings are an artist's conception and are intended as a general reference only. Please ask one of the helpful sales staff to reference the most recent set of architectural construction drawings for most up to date dimensions and other details. Please refer to disclosure statement for specific offering details. E. & O.E. Sales and Marketing provided by Fifth Avenue Real Estate Marketing Ltd. [www.fifthave.ca](http://www.fifthave.ca)